

**giles &
posner**[®]
Sörbet

Candyfloss
Maker
INSTRUCTION MANUAL

Please retain instructions for future reference.

Safety Instructions

When using electrical appliances, basic safety precautions should always be followed.

Check that the voltage indicated on the rating plate corresponds with that of the local network before connecting the appliance to the mains power supply.

Children aged from 8 years and people with reduced physical, sensory or mental capabilities or lack of experience and knowledge can use this appliance, only if they have been given supervision or instruction concerning use of the appliance in a safe way and understand the hazards involved.

Children should be supervised to ensure that they do not play with the appliance.

Unless they are older than 8 and supervised, children should not perform cleaning or user maintenance.

This appliance is not a toy.

If the power supply cord, plug or any part of the appliance is malfunctioning or if it has been dropped or damaged, cease using the product immediately to avoid potential injury.

This appliance contains no user serviceable parts, only a qualified electrician should carry out repairs. Improper repairs may place the user at risk of harm.

Keep the appliance and its power supply cord out of the reach of children.

Keep the appliance out of the reach of children when it is switched on or cooling down.

Keep the appliance and its power supply cord away from heat or sharp edges that could cause damage.

Keep the power supply cord away from any parts of the appliance that may become hot during use.

Keep the appliance away from other heat emitting appliances.

Do not immerse the appliance in water or any other liquid.

Do not operate the appliance with wet hands.

Do not leave the appliance unattended whilst connected to the mains power supply.

Do not remove the appliance from the mains power supply by pulling the cord; switch it off and remove the plug by hand.

Do not pull or carry the appliance by its power supply cord.

Do not use the appliance for anything other than its intended use.

Do not use any accessories other than those supplied.

Do not use this appliance outdoors.

Do not store the appliance in direct sunlight or in high humidity conditions.

Do not move the appliance whilst it is in use.

Do not touch any sections of the appliance that may become hot or the heating components of the appliance, as this could cause injury.

Do not use sharp or abrasive items with this appliance; use only heat-resistant plastic or wooden spatulas to avoid damaging the non-stick surface.

Switch off the appliance and disconnect it from the mains power supply before changing or fitting accessories.

Always unplug the appliance after use and before any cleaning or user maintenance.

Always ensure that the appliance has cooled fully after use before performing any cleaning or maintenance or storing away.

Always use the appliance on a stable, heat-resistant surface, at a height that is comfortable for the user.

Use of an extension cord with the appliance is not recommended.

This appliance should not be operated by means of an external timer or separate remote control system, other than that supplied with this appliance.

This appliance is intended for domestic use only. It should not be used for commercial purposes.

The outer surface of the appliance may get hot during operation.



CAUTION: Hot surface – do not touch the hot section or heating components of the appliance.

Take care not to pour water on the heating element.

WARNING: Keep the appliance away from flammable materials.

Care and Maintenance

Before attempting any cleaning or maintenance, unplug the Candyfloss Maker from the mains power supply and check that it has fully cooled.

STEP 1: Wipe the Candyfloss Maker base unit with a soft, damp cloth and dry thoroughly.

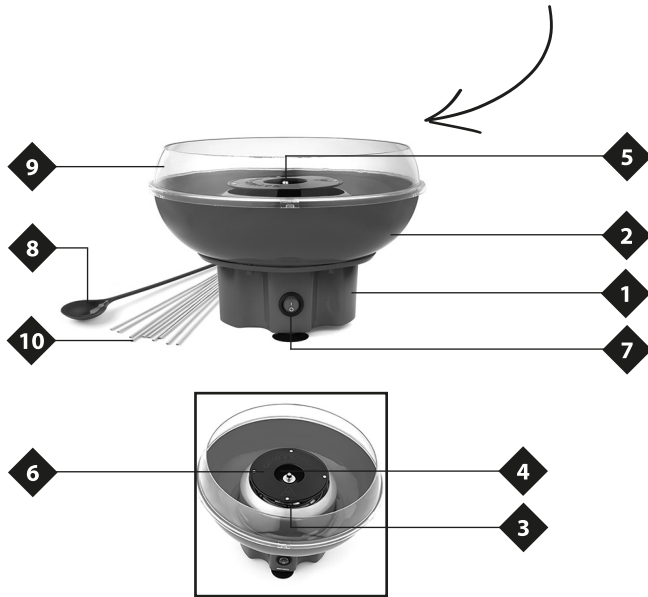
STEP 2: Clean the sugar pan, plastic bowl, splash guard and measuring spoon in warm, soapy water, then rinse and dry thoroughly.

Do not immerse the Candyfloss Maker in water or any other liquid.

Never use harsh or abrasive cleaning detergents or scourers to clean the Candyfloss Maker, as this could damage the surface.

NOTE: The Candyfloss Maker should be cleaned after each use.

Description of Parts



1. Candyfloss Maker base unit
2. Plastic bowl
3. Sugar pan (removable)
4. Sugar inlet
5. Driving shaft thread (not visible when fully assembled)
6. Heating element (non-removable)
7. On/Off switch
8. Measuring spoon
9. Splash guard
10. Candyfloss sticks

Instructions for Use

Before First Use

Clean the Candyfloss Maker following the instructions in the section entitled 'Care and Maintenance'.

NOTE: When using the Candyfloss Maker for the first time, a slight odour may be emitted. This is normal and will soon subside. Allow for sufficient ventilation around the Candyfloss Maker.

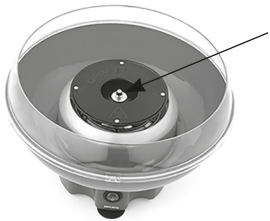
Assembling the Candyfloss Maker

STEP 1: Position the Candyfloss Maker base unit on a stable, heat-resistant surface at a height that is comfortable for the user.

STEP 2: Place the plastic bowl onto the Candyfloss Maker base unit and twist it in an anticlockwise direction, until it locks into position.

STEP 3: Attach the splash guard to the top of the plastic bowl by gently pushing it down until it is secure.

STEP 4: Place the sugar pan onto the driving shaft thread, which is located in the centre of the heating element, so that the tabs on the driving shaft thread align with the slots on the sugar pan. Once aligned, push the sugar pan all the way down onto the driving shaft thread to lock into place.



Align the slots on the sugar pan with the tabs on the driving shaft thread to fully insert it.

Once the slots are in line, firmly push down to lock in.

Using the Candyfloss Maker

STEP 1: Plug in and switch on the Candyfloss Maker at the mains power supply.

STEP 2: Turn on the Candyfloss Maker using the on/off switch. Allow the Candyfloss Maker to preheat for approx. 4–5 minutes and then turn it off using the on/off switch.

WARNING: NEVER ADD SUGAR WHILST THE DEVICE IS ON. MAKE SURE THE CANDYFLOSS MAKER IS SWITCHED OFF.

STEP 3: Using only the measuring spoon provided, carefully add one scoop of sugar into the sugar inlet in the centre of the sugar pan and then turn on the Candyfloss Maker using the on/off switch. The sugar pan will begin to spin and heat up. It will take approx. 3–5 minutes for the candyfloss to form.

STEP 4: Slowly roll the candyfloss stick around the edge of the plastic bowl in a clockwise direction.

STEP 5: Once the candyfloss has increased in volume, roll the candyfloss stick around the top of the sugar pan to collect it. To refill the Candyfloss Maker, turn it off using the on/off switch and then add one measuring spoon of sugar into the sugar opening/inlet in the sugar pan.

STEP 6: When all of the candyfloss is made, turn off the Candyfloss Maker using the on/off switch and unplug it from the mains power supply.

NOTE: Coloured candyfloss can only be made by using coloured sugar. White granulated sugar will not produce coloured candyfloss.

CAUTION: Make sure the sugar pan is not spinning when adding sugar to the Candyfloss Maker.

WARNING: Do not touch the sugar pan or heating element, as they will be very hot during and immediately after use.

Check that the sugar is poured into the sugar pan and does not spill onto the heating element.

Do not overfill the sugar pan, as this may cause sugar to spill into the heating element.

Disassembling the Candyfloss Maker

STEP 1: Switch off and unplug the Candyfloss Maker from the mains power supply. Allow the Candyfloss Maker to fully cool before attempting to disassemble it.

STEP 2: Once the Candyfloss Maker has fully cooled, remove the sugar pan by pulling it up and off the driving shaft in the centre of the heating element.

STEP 3: Twist the plastic bowl in a clockwise direction to unlock, and then remove it from the Candyfloss Maker base unit.

STEP 4: Remove the splash guard by carefully lifting it up and off the plastic bowl.

WARNING: The Candyfloss Maker will be hot immediately after use, make sure that the product is fully cool before attempting to disassemble the Candyfloss Maker.

Storage

Check that the Candyfloss Maker is cool, clean and dry before storing in a cool, dry place. Never wrap the cord tightly around the Candyfloss Maker; wrap it loosely to avoid causing damage.

Specifications

Product code: EK2641GS

Input: 220–240 V~ 50–60 Hz

Output: 400 W

Notes:

Connection to the mains

Please check that the voltage indicated on the product corresponds with your supply voltage.

Important

As the colours in the mains lead of this appliance may not correspond with the coloured markings identifying the terminals in your plug, please proceed as follows:

The wires in the mains lead are coloured in accordance with the following code:

Blue Neutral (N)

Brown Live (L)

Green/Yellow Earth (\perp)

FOR UK USE ONLY - Plug fitting details
(where applicable).

The wire coloured BLUE is the NEUTRAL and must be connected to the terminal marked N or coloured BLACK.

The wire coloured BROWN is the LIVE wire and must be connected to the terminal marked L or coloured RED.

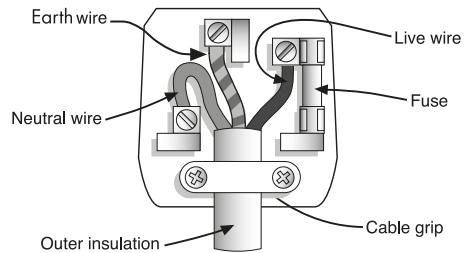
The wire coloured GREEN/YELLOW must be connected to the terminal marked with the letter E or marked \perp .

On no account must either the BROWN or the BLUE wire be connected to the EARTH terminal (\perp).

Always ensure that the cord grip is fastened correctly.

The plug must be fitted with a fuse of the same rating already fitted and conforming to BS 1362 and be ASTA approved.

If in doubt consult a qualified electrician who will be pleased to do this for you.



Non-rewireable mains plug

If your appliance is supplied with a non-rewireable plug fitted to the mains lead and should the fuse need replacing, you must use an ASTA approved one (conforming to BS 1362 of the same rating).

If in doubt, consult a qualified electrician who will be pleased to do this for you.

If you need to remove the plug - DISCONNECT IT FROM THE MAINS and then cut it off the mains lead and immediately dispose of it safely. Never attempt to reuse the plug or insert it into a socket outlet as there is a danger of an electric shock.

**UP Global Sourcing UK Ltd.,
UK. Manchester OL9 0DD.
Germany. 51149 Köln.**

If this product does not reach you in an acceptable condition please contact our Customer Services Department at www.upgs.com/giles-posner

Please have your delivery note to hand as details from it will be required.

If you wish to return this product please return it to the retailer from where it was purchased with your receipt (subject to their terms and conditions).

Guarantee

All products purchased as new carry a manufacturer's guarantee; the time period of the guarantee will vary dependent upon the product. Where reasonable proof of purchase can be provided, Giles and Posner will provide a standard 12 month guarantee with the retailer from the date of purchase. This is only applicable when products have been used as instructed for their intended, domestic use. Any misuse or dismantling of products will invalidate any guarantee.

Under the guarantee, we undertake to repair or replace free of any charge any parts found to be defective. In the event that we cannot provide an exact replacement, a similar product will be offered or the cost refunded. Any damages from daily wear and tear are not covered by this guarantee, nor are consumables such as plugs, fuses etc.


Please note that the above terms and conditions may be updated from time to time and we therefore recommend that you check these each time you revisit the website.

Nothing in this guarantee or in the instructions relating to this product excludes, restricts or otherwise affects your statutory rights.

Disposal of Waste Batteries and Electrical and Electronic Equipment



This symbol on the product, its batteries or its packaging means that this product and any batteries it contains must not be disposed of with household waste. Instead, it is the user's responsibility to hand this over to an applicable collection point for the recycling of batteries and electrical and electronic equipment. This separate collection and recycling will help to conserve natural resources and prevent potential negative consequences for human health and the environment due to the possible presence of hazardous substances in batteries and electrical and electronic equipment, which could be caused by inappropriate disposal. Some retailers provide take-back services which allow the user to return exhausted equipment for appropriate disposal. **It is the user's responsibility to delete any data on electrical and electronic equipment prior to disposal.** For more information about where to drop batteries, electrical and electronic waste off, please contact the local city/municipality office, household waste disposal service, or the retailer.

Find us on 

www.facebook.com/GilesAndPosner

*To be eligible for the extended guarantee,
go to **guarantee.upgs.com/giles-and-posner** and
register your product within 30 days of purchase.

Manufactured by:
UP Global Sourcing UK Ltd.,
UK. Manchester OL9 0DD.
Germany. 51149 Köln.

MADE IN CHINA.

www.upgs.com/giles-posner

©Giles & Posner trademark. All rights reserved.

CD200319MD190922/V6



2
year*
GUARANTEE